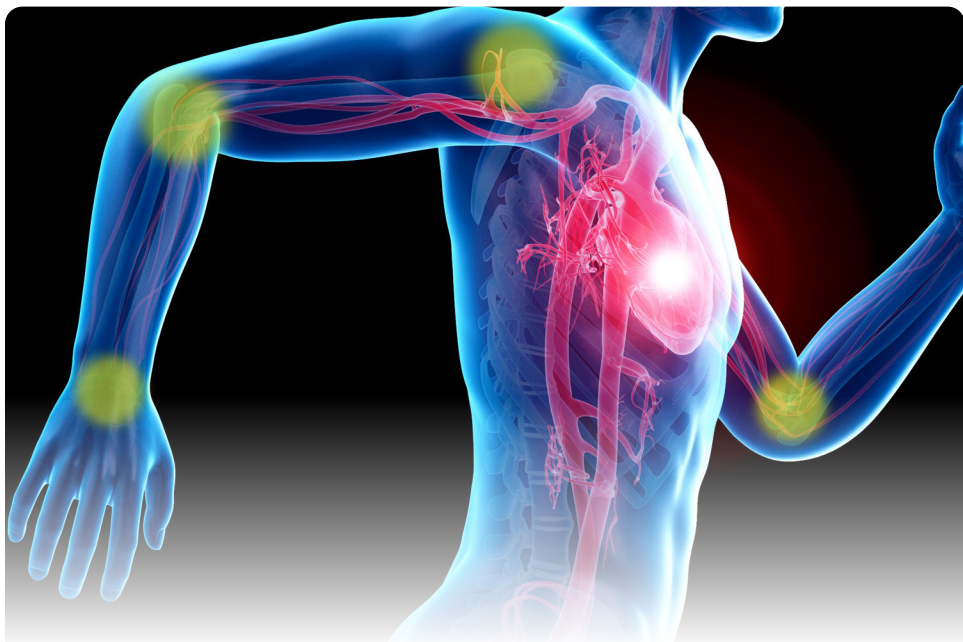




Serrapeptase (Peptizyme-SP)

Potent Systemic Enzyme



Proteolytic and Mucolytic Enzymes for:

- ▶ Acute and chronic inflammation
- ▶ Pain and swelling
- ▶ ENT, sinus and respiratory infections
- ▶ Mucous associated with allergies and cough
- ▶ Muscle, joint and tissue recovery
- ▶ Post-operative healing



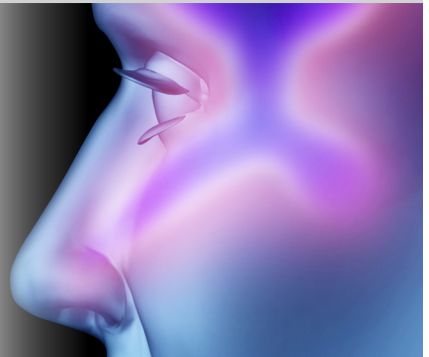
Serrapeptase (Peptizyme-SP) – Systemic Enzyme

Serrapeptase (Peptizyme SP) is a natural proteolytic enzyme produced from the enterobacteria *Serratia mercesans*, as originally found in the intestine of the silkworm. This enzyme possesses potent anti-inflammatory action and research shows profound benefits in the management of pain and inflammation.

Mechanism of Action

Serrapeptase demonstrates the ability to reduce capillary permeability, breaks down abnormal proteins, facilitates absorption of decomposed

A concentrated natural proteolytic enzyme supplement. Our serrapeptase is enterically-coated to maximize efficacy, allowing the enzymes to survive the acidic conditions of the stomach, leading to greater absorption



product through blood and lymphatics, and has a regulating effect on immune cell migration from lymph nodes to inflamed and injured tissue. In addition, serrapeptase is able to dissolve by-products (damaged and dead tissue) of the healing response, without harming living tissue. This makes serrapeptase an effective broad spectrum enzyme-based therapeutic to combat symptoms of inflammation and inflammatory conditions.

Serrapeptase (Peptizyme SP): a superior form of Serrapeptase

- ▶ Enteric coated to survive the acidic conditions of the stomach
- ▶ Strongest Serrapeptase available – 120,000 SPU per capsule
- ▶ Fermented and suitable for vegetarians
- ▶ Free of pesticides, chemicals, preservatives, animal derivatives, dairy, yeast, fish & shellfish, peanuts and tree nuts, and kosher-certified ingredients.

Practitioners Use Proteolytic Enzymes for:

- ▶ Pain management
- ▶ Inflammation and inflammatory disorders
- ▶ Post-operative swelling and inflammation
- ▶ Wound healing and repair
- ▶ Respiratory conditions including sinusitis and bronchitis
- ▶ Reduce cheek swelling and pain after dental surgery
- ▶ Breaks down and improve elimination of mucous associated with cough and allergies
- ▶ Rheumatoid arthritis, muscle and joint inflammation
- ▶ Breaks down biofilm



Medicinal ingredients: Each capsule contains:

Serrapeptase (120,000 Serratiopeptidase units) 58 mg

Non-medicinal ingredients: Maltodextrin, hydroxypropyl methylcellulose, methacrylic acid copolymer, tapioca dextrin.

Recommended dose (adults): Take 1 capsule once per day. Take 2 hours after a meal.

Caution/Warnings: If symptoms persist or worsen, discontinue use and consult a health care practitioner. If you are pregnant or breastfeeding, consult a health care practitioner prior to use.

If you have a gastrointestinal lesion/ulcer, are taking anticoagulant/ blood thinner or anti-inflammatory medication, or are having surgery, consult a health care practitioner prior to use.

Known adverse reactions: Hypersensitivity/allergy has been known to occur; in which case, discontinue use.

NPN 80084599 • 60 Caps



References

1. C.D. Buckley, D.W. Gilroy, C.N. Serhan, et al. The resolution of inflammation Nat Rev Immunol, 13 (2013), pp. 59-66, 10.1038/nri3362
2. G. Klein, W. Kulich Short-term treatment of painful osteoarthritis of the knee with oral enzymes. A randomized, double-blind study versus diclofenac Chem Drug Invest, 19 (1) (2000), pp. 15-23
3. T.A. Khateeb, Y. Nusair Effect of the proteolytic enzyme serrapeptase on swelling, pain and trismus after surgical extraction of mandibular third molars Int J Oral Maxillofac Surg, 37 (2008), p. 264e8
4. Y. Ishihara, S. Kitamura, F. Takaku Experimental studies on distribution of cefotiam, a new betalactam antibiotic, in the lung and trachea of rabbits. II. Combined effects with serratiopeptidase Jpn J Antibiot, 36 (10) (1983), pp. 2665-2670

Biomed also recommends these fine products...



BIOMED.

Quality. Excellence. Beyond Medicine.™

102 - 3738 North Fraser Way, Burnaby, B.C. V5J 5G7 | 1-800-665-8308 | biomedicine.com